



DRJ SPRING 2020
March 15-18, Orlando

NYU | Department of Public Safety

Putting Plans Into Action: Speeding Response with Data, Locally and Globally

Jack Briggs, Vice President for Global Resiliency and Security
Anne-Marie McLaughlin, Director, Emergency Management and Continuity

1



New York University's Global Footprint



- 15 Campuses in 11 Countries
- 60,000+ Direct Constituents
- Highest Number of International Students in America
- Sends more students abroad than any other American University
- 8,700+ Travelers to 120 Countries in 2017

2



NYU | Department of
Public Safety

Collaborative, Coordinated Activities



3



NYU | Department of
Public Safety

Value of Plans

Some Context

- Recently Established
- Existing Institutional Plans
- Evacuation Plans
- Continuity of Operations Plans
 - NYC
 - Abu Dhabi and Shanghai
- Global Academic Centers
- ITDR Plans



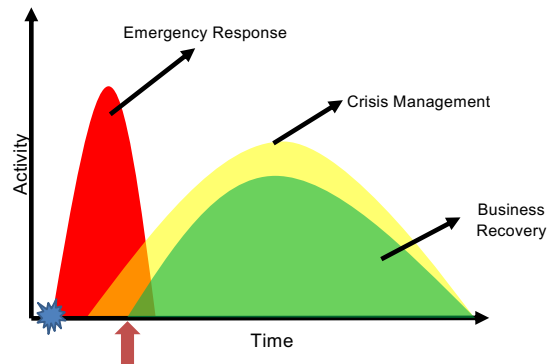
4

4

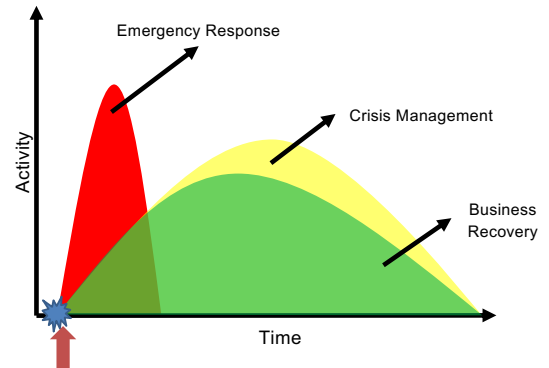


Business Continuity (BC) is defined as the capability of the organization to continue delivery of products or services at acceptable predefined levels following a disruptive incident.

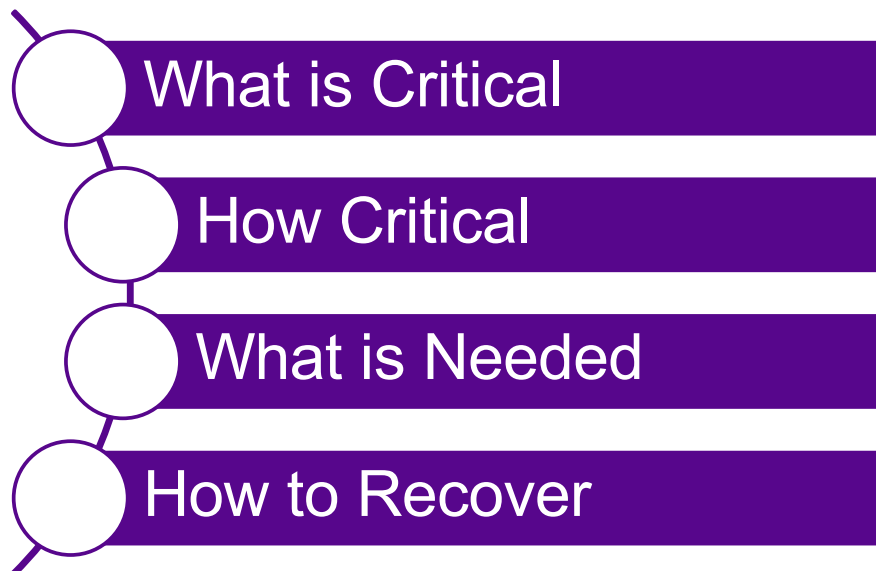
FROM:



TO:



5



6

6

Loss of People

Anything that might affect staff's ability to perform critical activities.

Examples:

- Flu
- Transportation

Loss of Place

Anything that might affect the space where critical activities are performed.

Examples:

- Building fire
- Pipe burst

Loss of Power

Any utility outages that might interrupt critical activities.

Examples:

- Power Outage
- Water Outage

Loss of Tech

Anything that might prevent access to systems, internet and/or applications.

Examples:

- Network Failure
- System Failure

7

7



8



NYU | Department of Public Safety

Data-gathering for Resilient Continuity

9



NYU | Department of Public Safety

Global Security Operations Center

Data Gathering - Information and Mitigation

- **Situational Awareness**
 - Support local site staff in notification of and situational awareness during an event
 - Event monitoring for events with large NYU presence
- **Multiple Platforms and Software Systems**
 - ArcGIS virtual mapping platform
 - A network of 3000+ cameras
 - Analysis subscription services
- **Customized Global and Domestic Analytic Products**
 - Risk assessments & regional outlooks
 - Trip planning and support
 - Safety and security information and communications
 - Insight on potentially disruptive events (i.e protests)
 - Design indicators to monitor a situation for escalatory triggers
 - Forecasted impacts from major geopolitical developments
- **24/7/365 in coordination with Global Communications Center**

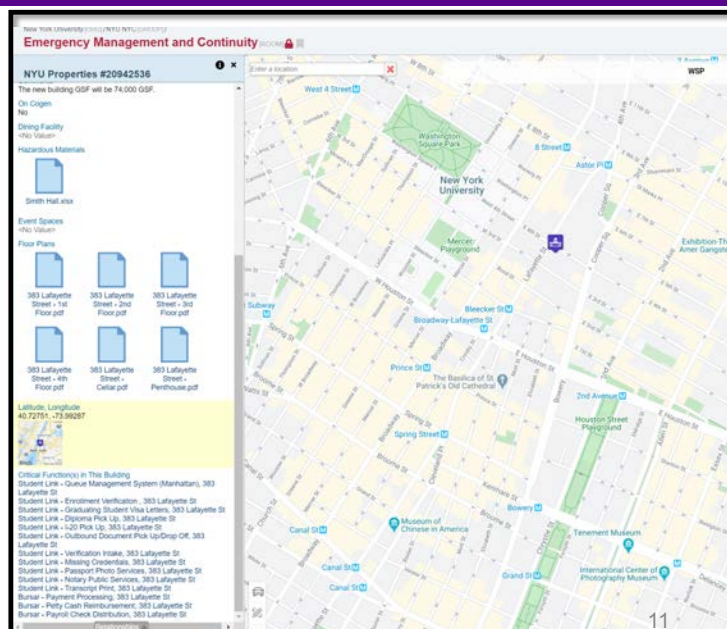


10

Data Gathering- Data Execution

- Notification
- Protective Actions
- Alerting
- Impact Assessment
- Business Continuity

What do we know?
 What don't we know?
 What are we doing about it?
 Who else needs to know?



11

Notification Sources:

- NYU DPS Post/GAC
- Calls to GCC
- Government-issued alerts (NWS, NYCEM, DHS/CISA, NYPD, OSAC)
- Dataminr
- Citizen App

Terror Attack Kills 8 and Injures 11 in Manhattan



Amateur video appears to show a suspect trying to flee the scene of a deadly vehicle attack near the World Trade Center in Lower Manhattan before being stopped by the police.
 Bryan R. Smith for The New York Times

By Benjamin Mueller, William K. Rashbaum and Al Baker

Oct. 31, 2017

Read the latest on the Manhattan truck attack with our reporting on Wednesday's developments.

A driver plowed a pickup truck down a crowded bike path along the Hudson River in Manhattan on Tuesday, [killing eight people and injuring 11](#) before being shot by a police officer in what officials are calling the deadliest terrorist attack on New York City since

IDF airstrikes hit 15 sites in Gaza after 2 rockets fired at Israeli cities

Rockets appear to target Netanyahu election rally in Ashdod; security guards force him from stage; Iron Dome intercepts both

By TOK STAFF and JUDAH ARI GROSS
 11 September 2019, 2:43 am | 100 2




Illustrative: Explosions seen in the Gaza Strip after a reported IDF strike in response to rocket fire on Ashdod and Ashkelon on September 11, 2019 (Screenshots/Twitter)

The Israel Defense Forces launched a series of airstrikes on the Gaza Strip early Wednesday, just hours after terrorists fired two rockets at the southern cities of Ashkelon and Ashdod, where Prime Minister Benjamin Netanyahu was holding an election rally.

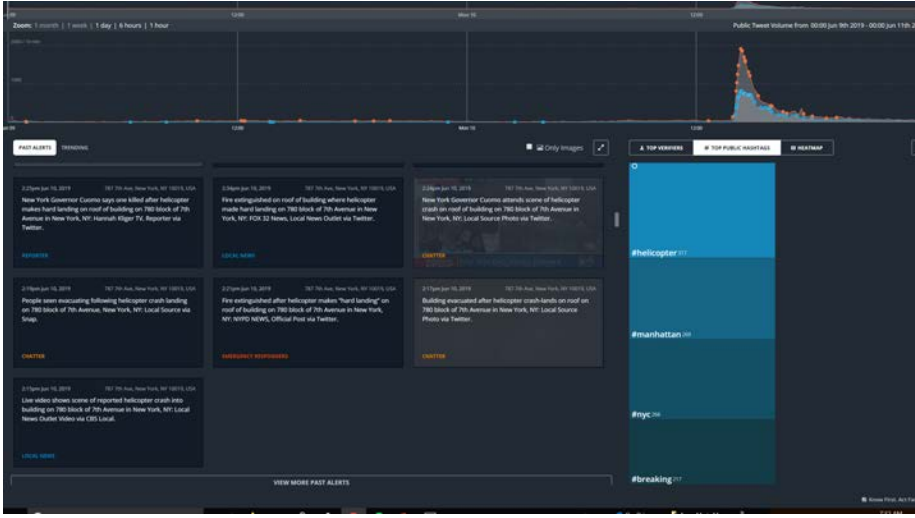
The IDF said warplanes hit 15 different targets across the Strip, "including a number of targets in a military base producing arms, a number of targets in a compound belonging to the naval forces and a terror tunnel belonging

12


NYU

Department of
Public Safety


Dataminr



The New York Times

Pilot Is Killed in Helicopter Crash on Roof of New York City Building

The accident unsettled many, but Gov. Andrew M. Cuomo said there was no indication that it was linked to terrorism.



on Andrew M. Cuomo of New York appts to reporters at the scene of a helicopter crash in Midtown Manhattan. One death has been reported. [Enter Friday for The New York Times](#)

By James Barron and Patrick McGhegan

June 10, 2019

[What you need to know to start the day: [Get New York Today in your inbox.](#)]

For hours on Monday, fog surrounded the skyscrapers in Midtown Manhattan, hiding the upper floors behind a gauzy, grayish curtain.

About the time that the late-lunch crowd would have been signaling for the check, there were noises that seemed out of place, even in noisy New York City: the disturbing roar of an aircraft flying low, followed by what some assumed was an explosion.


A helicopter had crashed onto the roof of an office building on Seventh Avenue and burst into flames.

Only a pilot was aboard the doomed aircraft. He was killed, and investigators were trying to determine if he had been trying to make an emergency landing.

Alerts spread on cellphones as a smoky plume streamed through the fog. *New York Times* columnist [wrote](#) that the crash had

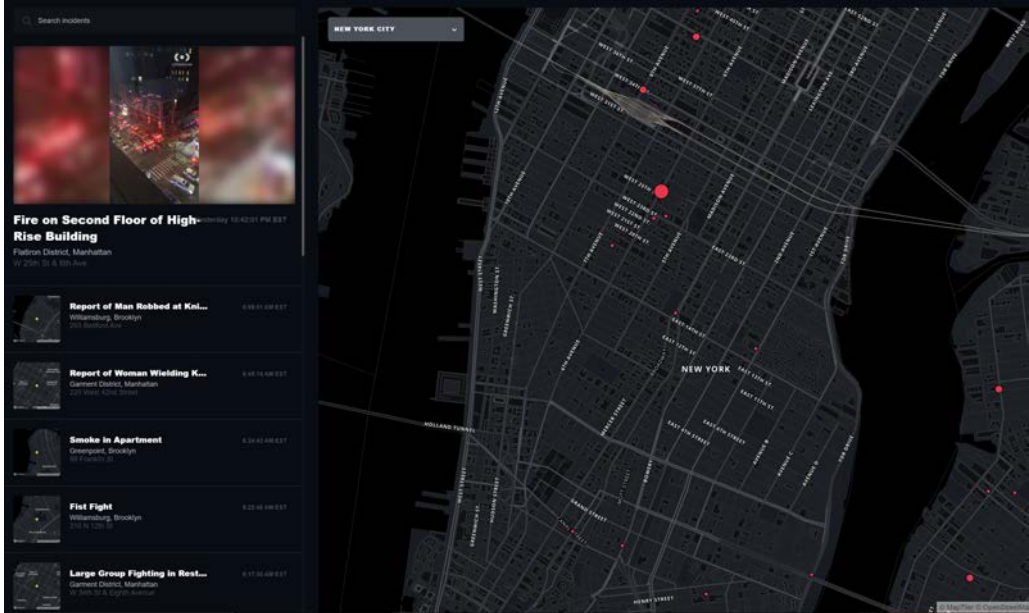
13

13


NYU

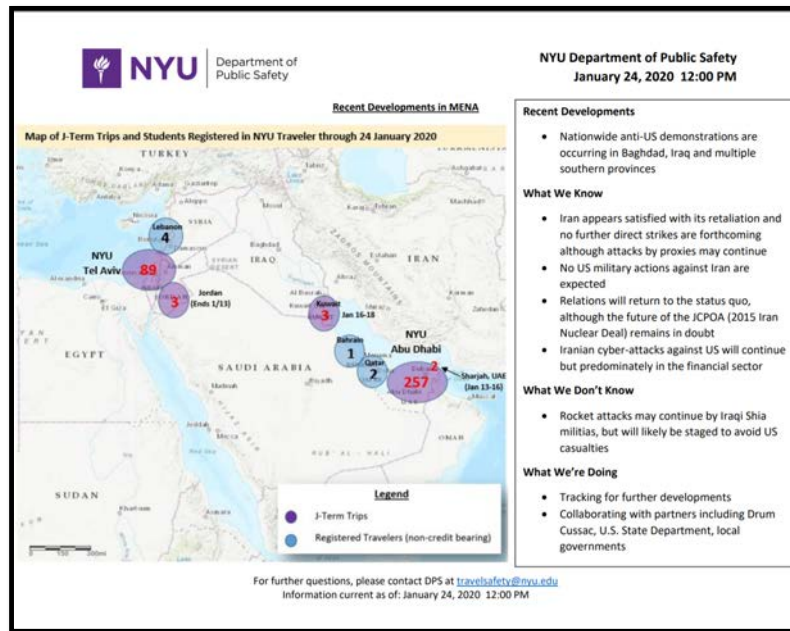
Department of
Public Safety

Citizen App



14

14



15



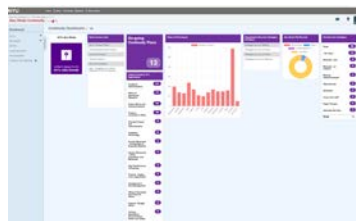
Metrics

- Critical Functions by RTO
- Critical Functions by Location
- Recovery Strategies by Impact Type
- Peak Impact
- Remote Work
- Vital Records
- Recovery Strategies
- Building Status
- Classroom Populations

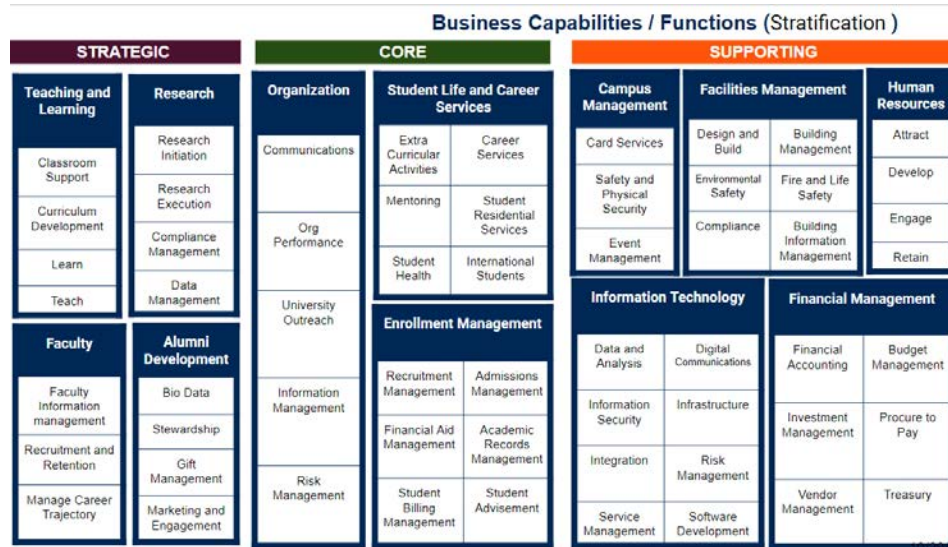
Different Locations Started with Different Plans Transition

Coordination with ITDR

- Abu Dhabi
- Shanghai
- New York City

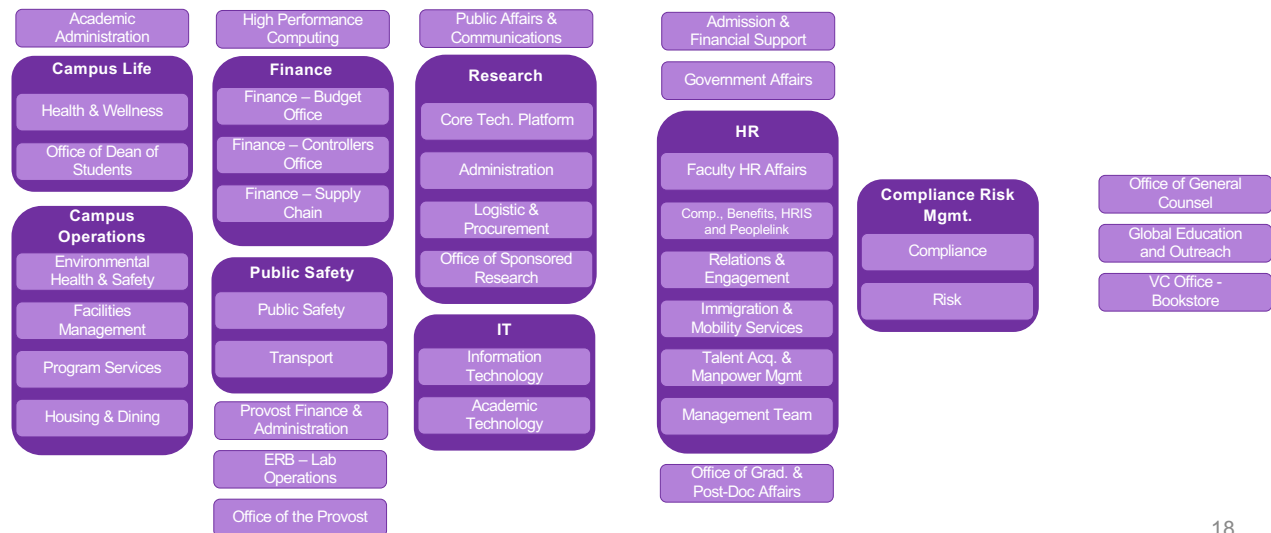


16



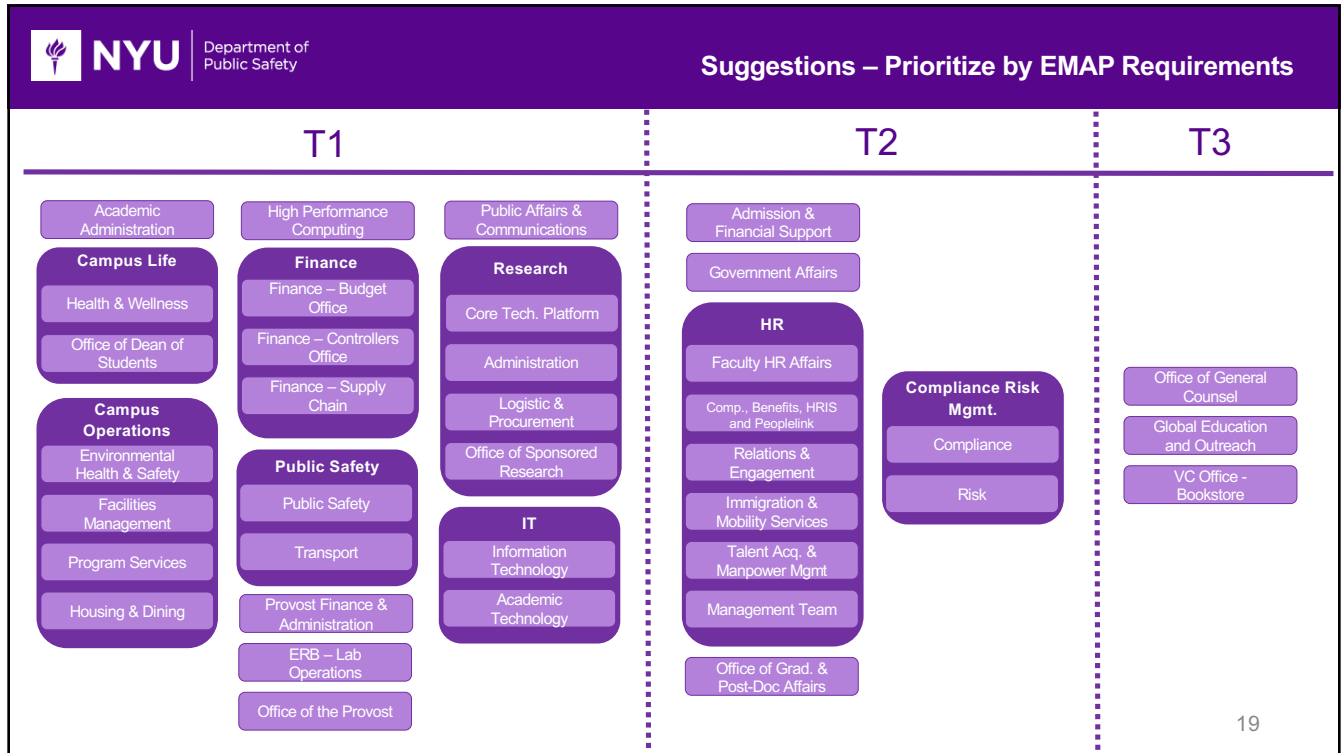
17

17



18

18



19

NYU | Department of Public Safety

Case Study: Shanghai Continuity

NYU | Department of Public Safety

NYU Department of Public Safety
February 1, 2020 12:00 PM

Novel Coronavirus in China

Cases Confirmed by Chinese Government as of February 1 at 12 am EST

Total Confirmed

11,374

Total Deaths

259

Total Recovered

252

Confirmed Cases by Country/Region

- 11,221 Mainland China
- 19 Thailand
- 17 Japan
- 16 Singapore
- 13 Hong Kong
- 11 South Korea
- 10 Taiwan
- 9 Australia
- 8 Malaysia
- 7 Germany
- 7 Macau
- 7 US
- 6 France
- 4 United Arab Emirates

Recent Developments

- The Trump Administration declared a public health emergency and announced that effective 5 pm tomorrow, 2 February it will bar non-US citizens who recently visited China from entering the country, with exceptions for those with family in the US
- Additionally, the Trump Administration will ask that US citizens arriving from China be self-quarantined for 14 days and report regularly to their local department of health
- Australia also stated that it will temporarily ban foreigners who arrive from China
- Vietnam announced it will stop all flights to and from China
- Airlines continue to cancel flights to China including Delta, United, American, and Qatar Airways
- 3,000 public hospitals will go on strike Monday in Hong Kong to demand that the border with mainland China be closed
- The US State Department announced an orderly departure for all family members under 21 years of age at all diplomatic posts in China

What We Know

- CDC is at Level 3: Avoid Nonessential Travel
- US State Department Travel Advisory Level 3: Reconsider Travel
- Shanghai government ordered local businesses to remain closed until February 10th
- Additionally, Shanghai mandated that all schools and universities remain closed until 17
- February: US Department of State allowed for the voluntary departure of non-emergency personnel and family members of U.S. government employees from Embassy Beijing and Consulate General Shanghai

What We Don't Know

- The virus was first reported in December 2019 and is not well understood by the medical community
- China's health minister said the coronavirus is increasing in virulence and now could be contagious even before people exhibit symptoms, making apparently healthy people possible carriers
- WHO and CDC have both confirmed human-to-human transference outside China

What We're Doing

- Tracking for further developments and communicating with providers and government representatives for additional information and insight
- Collaborating with the Student Health Center, OGS, OGP, and NYU Shanghai

For further questions, please contact DPS at travelsafety@nyu.edu
Information current as of: February 1, 2020 12:00 PM

20



Indicators of Escalating Coronavirus Outbreak

The following are a list of indicators tracking significant escalations in the spread and health risk from the Novel Coronavirus. The below chart tracks each indicator and whether or not it has been observed.

Indicator	Not Observed	Observed
US State Department raises travel advisory level 4 recommending that American citizens do not travel to mainland China		
China suspends transportation beyond Wuhan and Hubei province		
CDC raises alert level to Level 2: Practice Enhanced Precautions for Shanghai (raised to Level 3: Avoid Nonessential Travel)		
Human to human virus transmission is confirmed by CDC and WHO (WHO stated that human-to-human transmission occurred outside China)		
WHO declares public health emergency		
Confirmed cases in Shanghai exceed 1,000		
China closes or restricts access to public spaces in Shanghai to contain spread of virus		
Multiple or large scale quarantines are imposed outside of Hubei		
US higher education institutions cancel travel programs in Shanghai (Several US Universities are prohibiting undergraduate travel to China)		
US higher education institutions issue public statements to take significant action to mitigate health risks		
CDC raises alert level to Level 3: Avoid Nonessential Travel for Shanghai (raised to Level 3: Avoid Nonessential Travel for all of China)		
Commercial flights suspended to/from Shanghai (arrivals have canceled or are reducing flights due to less demand)		
Government officials declare a State of Emergency in Shanghai		
Transportation is suspended within Shanghai to include outbound travel (partially multiple flights to/from Shanghai are cancelled or suspended)		
US Embassy or western governments evacuate non-essential personnel from Shanghai and Beijing (family and non-emergency are voluntarily departing)		
A case of Coronavirus is not directly related to Wuhan confirmed in either NYC, Washington DC, or Los Angeles		
A case of Coronavirus not directly related to Wuhan is confirmed in Abu Dhabi or any international city that hosts an NYU Global Academic Center		
New York City declares a Public Health Emergency due to increasing confirmed cases		
Student Health Center reports confirmed cases among the NYU community in either NYC or a global location		

For further questions, please contact DPS at travel@nyu.edu

Coronavirus: Escalation Indicators

21

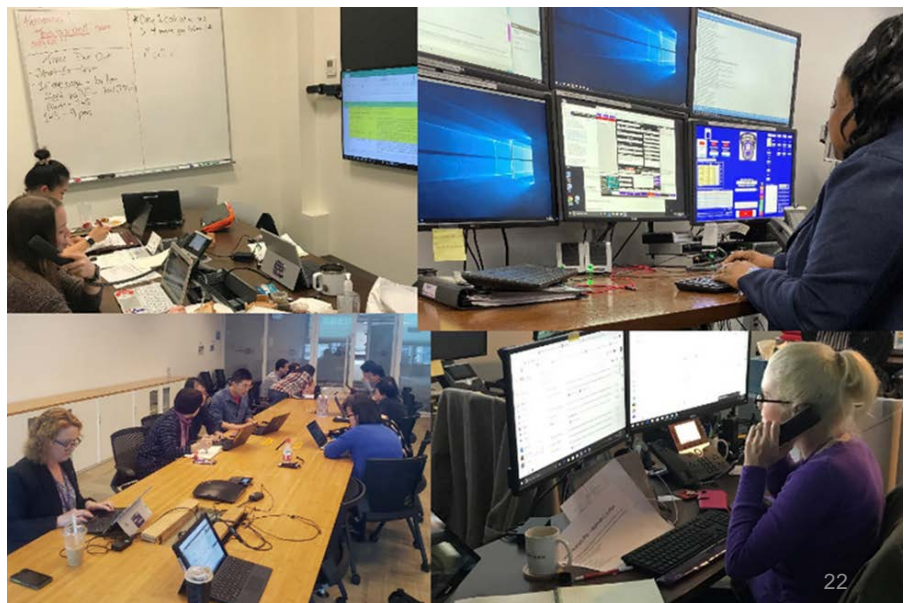
21



Shanghai Continuity Exercise: Pandemic Scenario

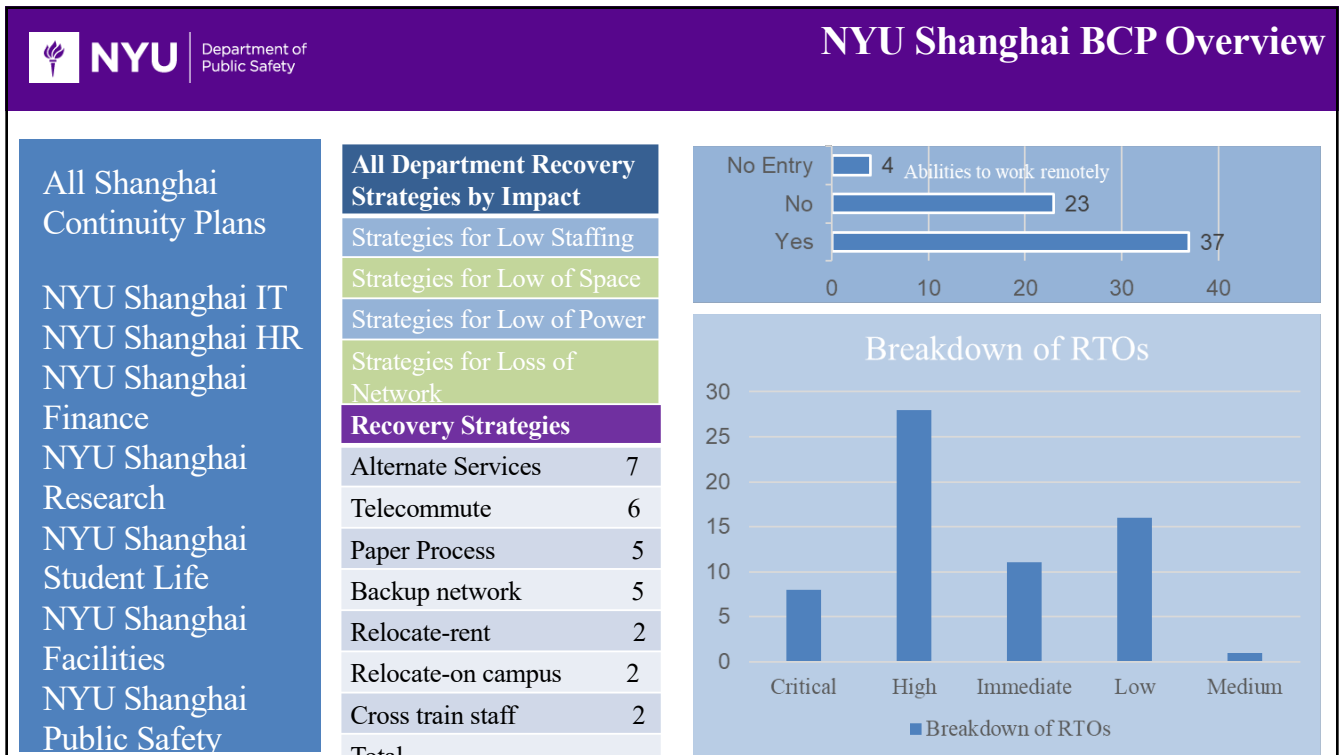
Global Functional Exercises

- Shanghai
- Abu Dhabi
- HSEEP
- Technology

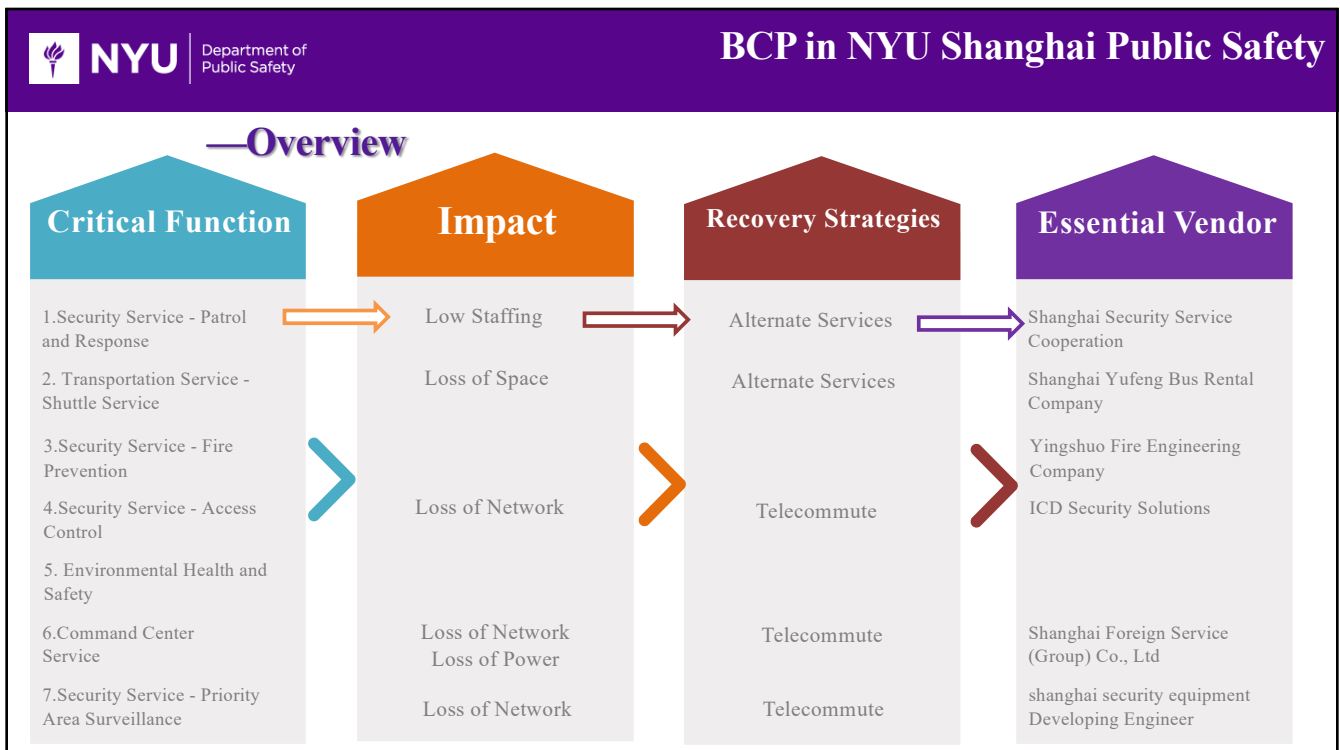


22

22



23



24

RESILIENT NYU



Thank You

Contact:

Jack Briggs, Vice President,
Global Resiliency and
Security
Jack.Briggs@nyu.edu

Anne-Marie McLaughlin, Director,
Emergency Management and Continuity
AMcLaughlin@nyu.edu

25