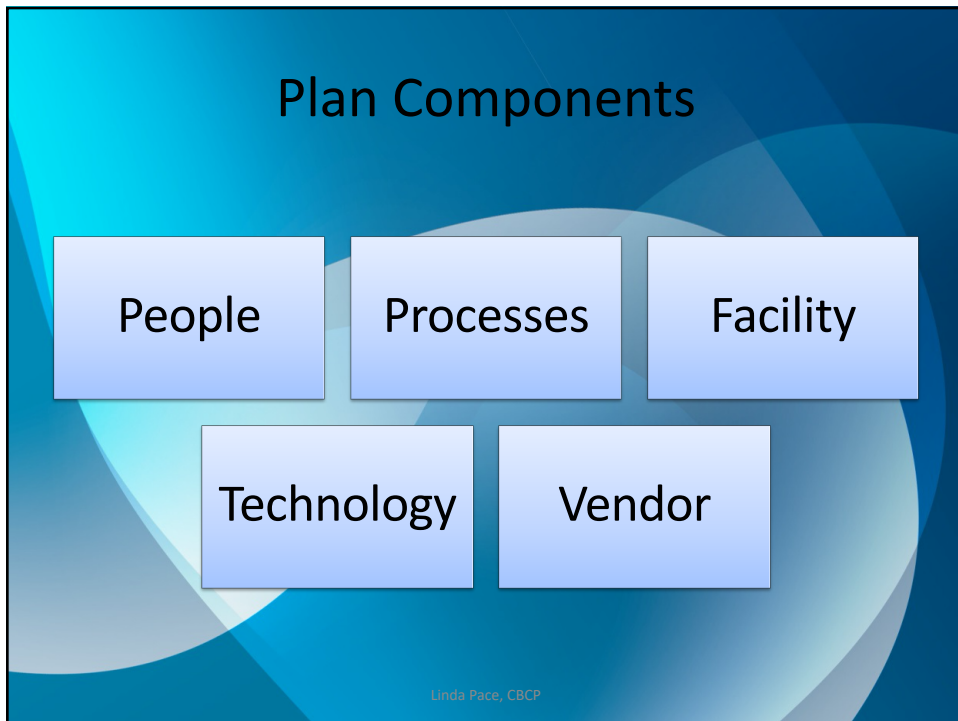


DRJ SPRING 2020
March 15-18, Orlando

Recharging Your Program:
A Leader's Guide to
Business Continuity and
Disaster Recovery

Linda Pace, CBCP

1



2

What Are The Key Components

IDENTIFYING PROCESSES & FUNCTIONS

Linda Pace, CBCP

3

Important or Critical?

Process 1	Process 2	Process 3	Process 4	Process 5	Process 6
Legal	Food Service	Security	Catering	Payroll	Transport.
	App Updates	IT Support	ATM		

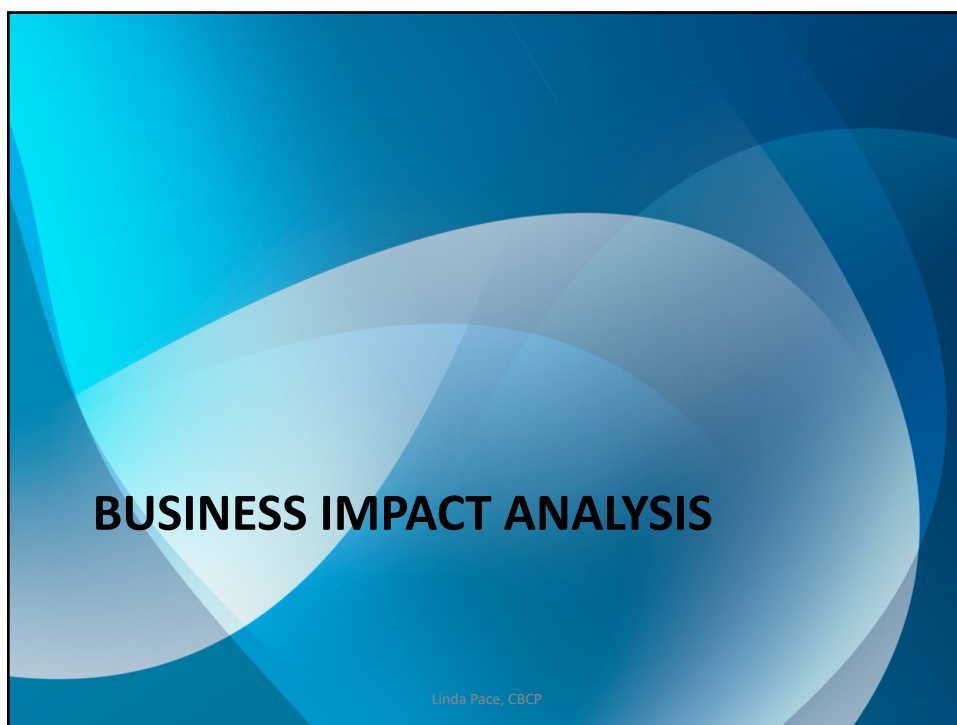
Linda Pace, CBCP

4

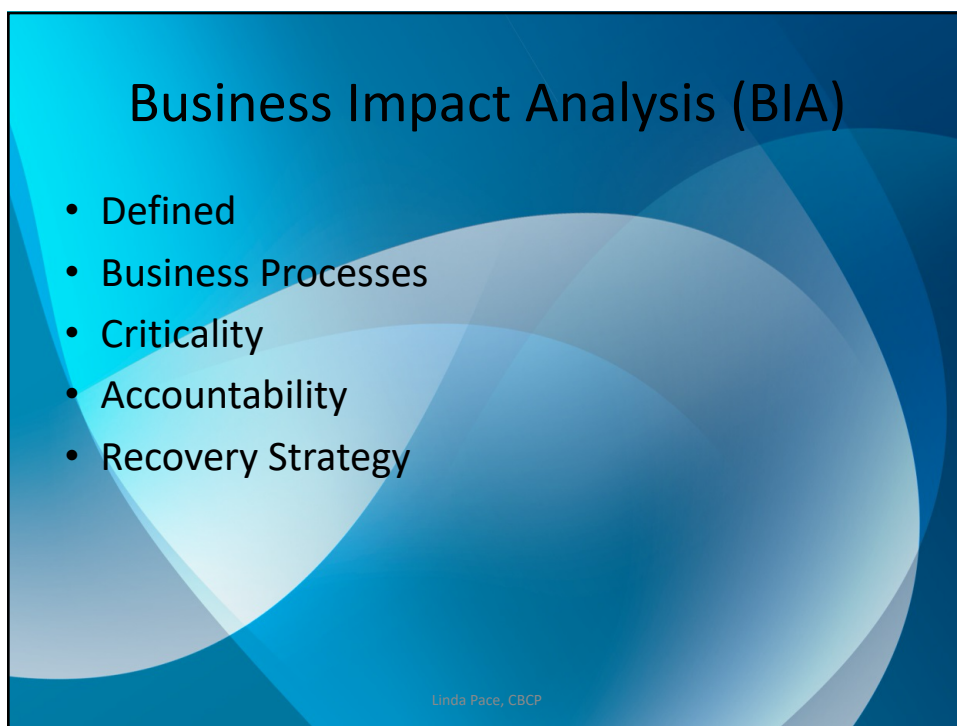
5



6



7



8

What is the Business Impact Analysis?

- Financial
- Operational
- Legal, Compliance
- Reputation
- Brand
- What Period Time

Ex. Financial loss of \$10,000 per day; 50k over time.

Linda Pace, CBCP

9

Recovery Time Objective (RTO)

- Why Is the RTO so important
- Worst Possible Time
- Operational Impact
- Financial Impact

Linda Pace, CBCP

10



11



12

Exercise

Work with in groups of 2-3

- Left Side of Room

•Team 1

Work with in groups of 2-3

- Right Side of Room

•Team 2

Linda Pace, CBCP

13



14

Facilities/Locations



Linda Pace, CBCP

15

TRAINING

Linda Pace, CBCP

16



17



18

Exercise



Linda Pace, CBCP

19

Exercise



Linda Pace, CBCP

20



21

A presentation slide with a blue background featuring abstract, overlapping circular shapes. The title "Test Plan" is centered at the top in a large, black, sans-serif font. Below the title is a table with five columns: "Accounting", "Type", "Date", "Led By", and "Results". The table has five rows, with the first row containing the column headers and the subsequent four rows containing the categories: "Human Resources", "Payroll", "Sales", and "Training". In the bottom right corner, the text "Linda Pace, CBCP" is written in a small, light blue font.

Accounting	Type	Date	Led By	Results
Human Resources				
Payroll				
Sales				
Training				

22



23



24

Business Continuity - Vital Records

Shared Drives

Home Drives

Cloud

Paper Records

Linda Pace, CBCP

25

Plan Maintenance



Linda Pace, CBCP

26



DRJ SPRING 2020
March 15-18, Orlando

Contact Us

Linda Pace
pacelinda@yahoo.com
862-215-8459
Instagram: **DisasterPlan101**
Twitter: **Disaster Plan101**

Linda Pace, CBCP